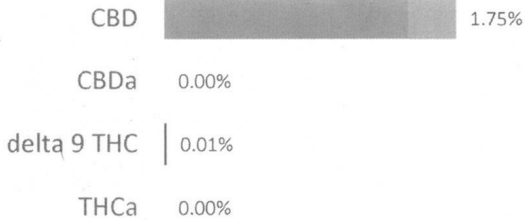
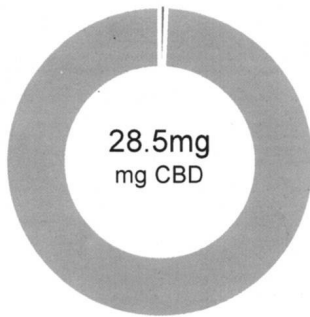


BS-25-FSO 905191-3

Batch ID:		Test ID:	4807966.008
Reported:	9-Sep-2019	Method:	TM14
Type:	Unit		
Test:	Potency		

CANNABINOID PROFILE


Compound	LOQ (mg)	Result (mg)	Result (mg/g)
Delta 9-Tetrahydrocannabinolic acid (THCA-A)	0.13	0.00	0.0
Delta 9-Tetrahydrocannabinol (Delta 9THC)	0.07	0.20	0.1
Cannabidiolic acid (CBDA)	0.15	0.00	0.0
Cannabidiol (CBD)	0.08	28.50	17.5
Delta 8-Tetrahydrocannabinol (Delta 8THC)	0.07	0.00	0.0
Cannabinolic Acid (CBNA)	0.18	0.00	0.0
Cannabinol (CBN)	0.08	0.00	0.0
Cannabigerolic acid (CBGA)	0.12	0.00	0.0
Cannabigerol (CBG)	0.06	0.00	0.0
Tetrahydrocannabivarinic Acid (THCVA)	0.11	0.00	0.0
Tetrahydrocannabivarin (THCV)	0.06	0.00	0.0
Cannabidivarinic Acid (CBDVA)	0.14	0.00	0.0
Cannabidivarin (CBDV)	0.08	0.10	0.1
Cannabichromenic Acid (CBCA)	0.10	0.00	0.0
Cannabichromene (CBC)	0.12	0.20	0.1
Total Cannabinoids		29.00	17.80
Total Potential THC**		0.20	0.12
Total Potential CBD**		28.50	17.49

NOTES:

of Servings = 1, Sample Weight=1.62952666666667g

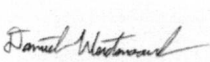
N/A

% = % (w/w) = Percent (Weight of Analyte / Weight of Product)

* Total Cannabinoids result reflects the absolute sum of all cannabinoids detected

** Total Potential THC/CBD is calculated using the following formulas to take into account the loss of a carboxyl group during decarboxylation step.

Total THC = THC + (THCa *(0.877)) and Total CBD = CBD + (CBDa *(0.877))

FINAL APPROVAL


 Daniel Weidensaul
 9-Sep-2019
 5:21 PM

PREPARED BY / DATE



 David Green
 9-Sep-2019
 6:02 PM

APPROVED BY / DATE

Testing results are based solely upon the sample submitted to Botanacor Laboratories, LLC, in the condition it was received. Botanacor Laboratories, LLC warrants that all analytical work is conducted professionally in accordance with all applicable standard laboratory practices using validated methods. Data was generated using an unbroken chain of comparison to NIST traceable Reference Standards and Certified Reference Materials. This report may not be reproduced, except in full, without the written approval of Botanacor Laboratories, LLC. ISO/IEC 17025:2005 Accredited A2LA Certificate Number 4329.02



Certificate #4329.02

SECTION 1: PRODUCT DETAILS

PRODUCT NAME	Hemp-derived CBD Bacon Flavored Dog Treat		
COMMON NAME	Hemp CBD Bacon Dog Treats		
PRODUCT DESCRIPTION	25 mg CBD Bacon Flavored Dog Treat		
PLANT PART	Aerial parts of industrial hemp plant		
INTENDED USE	For oral consumption		
EXTRACTION SOLVENT(S)	<input checked="" type="checkbox"/> CO ₂ <input checked="" type="checkbox"/> Ethanol <input checked="" type="checkbox"/> Hexane		
COUNTRY OF ORIGIN	USA	LOT #	905191
MANUFACTURE DATE	09/05/2019	CBD POTENCY	25 mg CBD per treat
EXPIRATION DATE	09/05/2020	NET WEIGHT	3.0 - 3.25 g per treat

SECTION 2: INGREDIENT AND NUTRITION INFORMATION

INGREDIENTS LIST	GUARANTEED ANALYSIS & CALORIC STATEMENT
<p>Ingredients: Treat [Yellow Peas, Dried Bacon, Dried Sweet Potatoes, Canola Oil (preserved with mixed Tocopherols), Cane Molasses, Organic Carrots, Apples, Cranberries, Blueberries, Rosemary Extract], Hemp Cannabidiol (CBD) Isolate, Hemp Cannabidiol (CBD) Distillate <i>(Contains < 0.3% THC)</i></p> <p>Processed in a facility which handles soy and, on separate equipment, handles fish gelatin which is not an ingredient in this product. Packaged in the same facility as wheat, peanuts, tree nuts (coconuts, pistachios, cashews), soy, and milk products.</p> <p><i>The FDA has not evaluated this product for safety or efficacy. This product is intended for oral use. This product is not intended to diagnose, treat, cure or prevent any disease.</i></p>	<p>Crude Protein: 11% minimum Crude Fat: 10% minimum Crude Fiber: 5% max Moisture: 10% max</p> <p>Caloric Content: 7 kcal/treat</p>

SECTION 3: FORMULA COMPOSITION

ACTIVE INGREDIENTS	LOT NUMBER
Hemp Cannabidiol (CBD) Isolate-Distillate	ISO-DIST-24719-B1

SECTION 4: PHYSICAL AND CHEMICAL PROPERTIES

PHYSICAL STATE	Solid, hard treat	COLOR	Brown	ODOR	Bacon
----------------	-------------------	-------	-------	------	-------

SECTION 5: RESIDUAL SOLVENT ANALYSIS FOR HEMP CBD OIL AND/OR CBD ISOLATE

Hexane	< 60 ppm	Ethanol	< 100 ppm
--------	----------	---------	-----------

SECTION 6: STORAGE AND HANDLING

STORAGE AND HANDLING	Store in original container in a cool, dark place. Keep out of direct light and humidity.
----------------------	-------------------------------------------------------------------------------------------